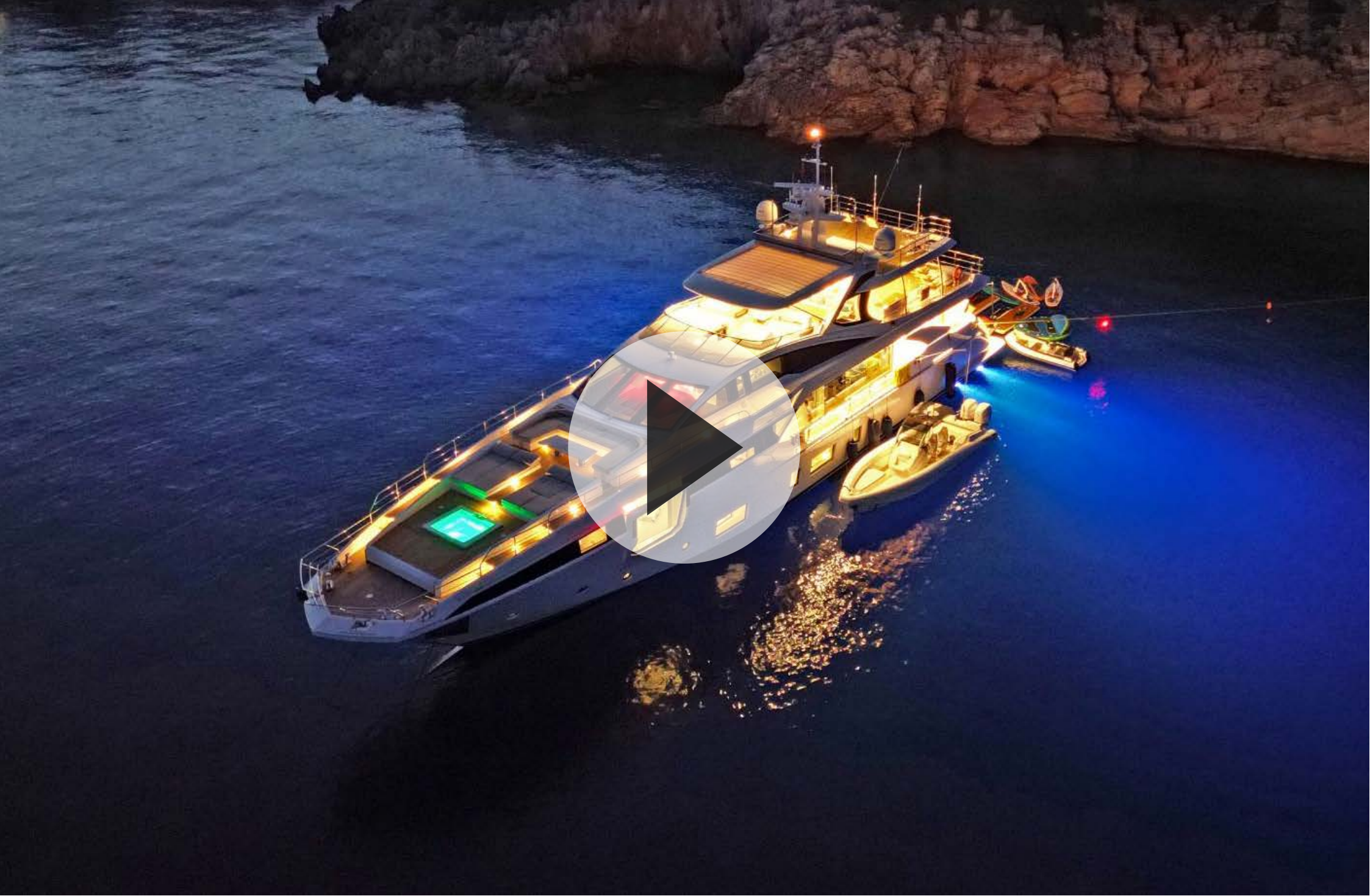




AZIMUT GRANDE 35 METRI / 2022 / € 9,500,000 EX VAT



- Watch Video -



- The Yacht -



- The Yacht -



- The Yacht -



- The Yacht -



- The Yacht -



- Bow -



- Bow -



- Flybridge Bar -



- Flybridge -



- Aft Cockpit -



- Aft Cockpit -



- Beach Club -



- Beach Club -



- Beach Club & Toys Exterior -



- Pilot House -



- Saloon Main Deck -



- Saloon Main Deck -



- Saloon & Dining Table -



- Dining Table -



- Owner's Cabin Main Deck -



- Owner's Cabin Bathroom -



- Owner's Cabin Balcony -



- Corridor -



- Vip Cabin -



- Vip Cabin -



- Vip Cabin -



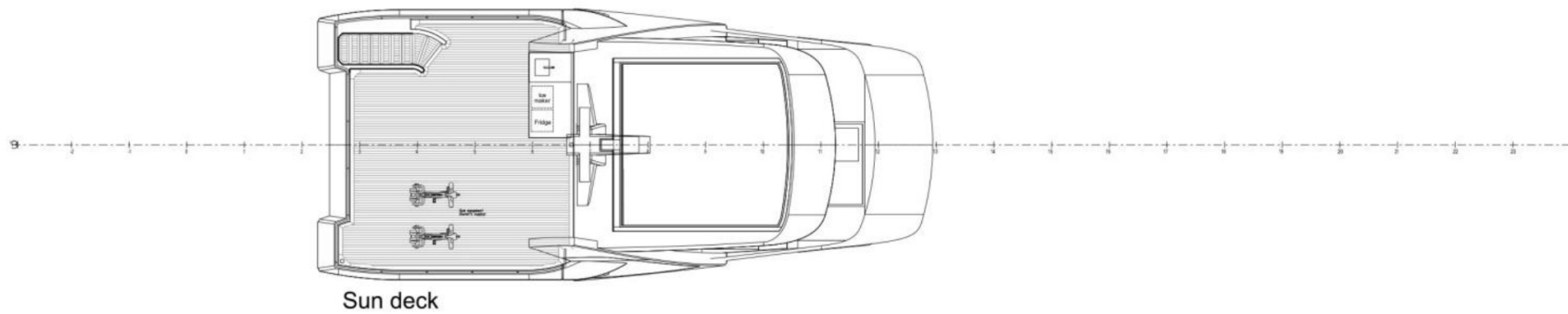
- Vip Cabin Bathroom -



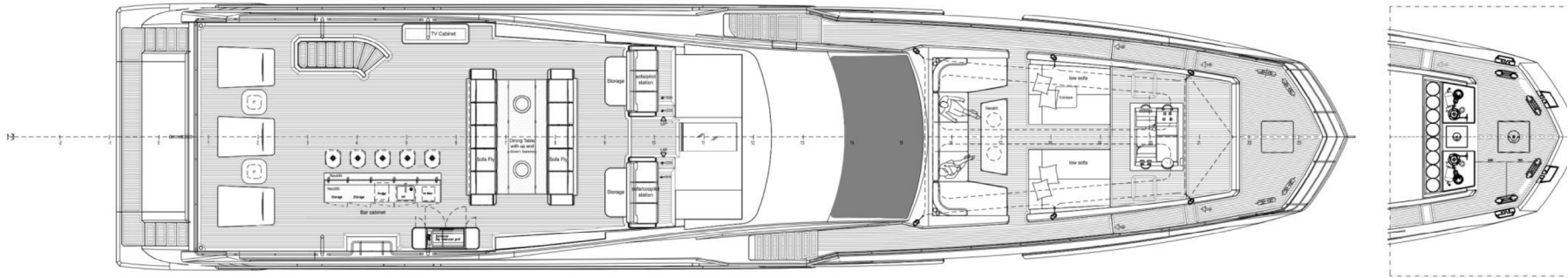
- Guest Cabin -



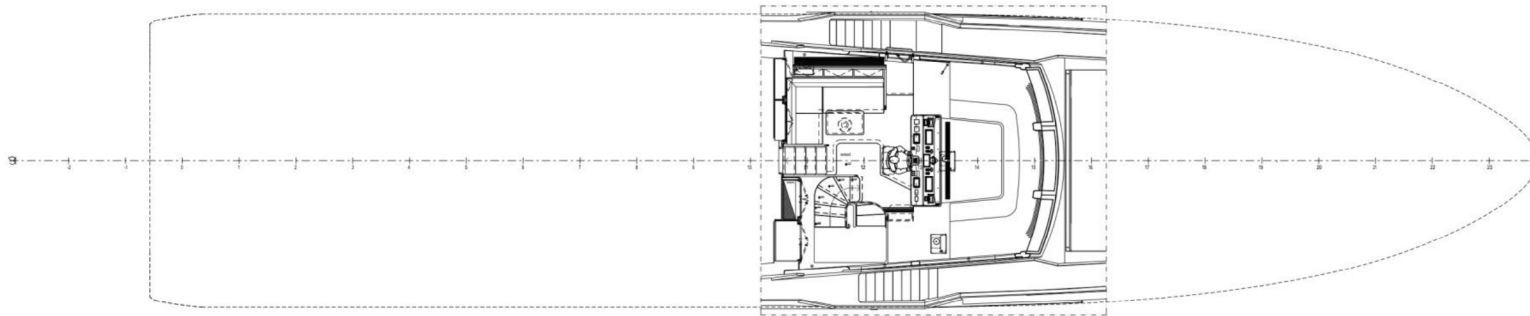
- Guest Cabin -



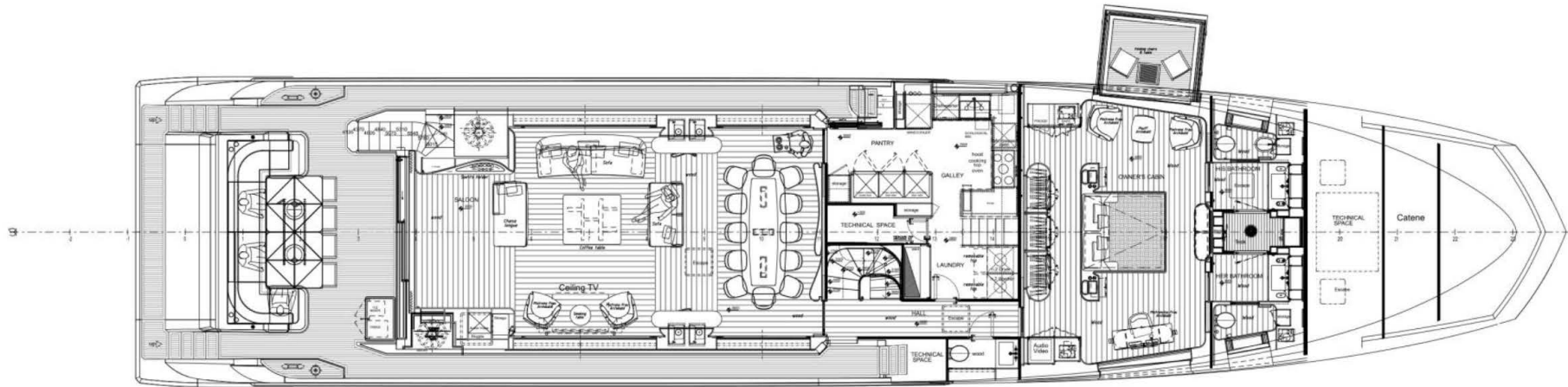
Sun deck



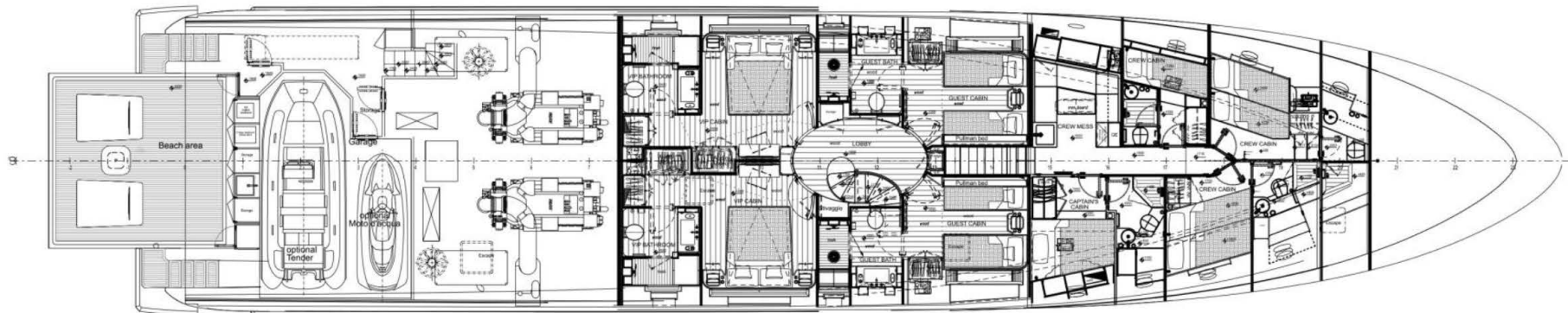
Fly bridge



Raised pilot house



Main deck



Lower deck

- Length Overall: 35m
- Beam max: 7.50m
- Draft: 1.91m
- Displacement (at full load): 154 t

#### **PERFORMANCE**

- Engines: 2 x 2.400 Mph (1790 KW) MTU 16V 2000 M93
- Engine hours: 1931hrs / 1931 hrs (20/05/2026)
- Generators: 2 x KOHLER 70 KW / 50 Hz
- Generator hours: PORT 7736 hrs /STBD 7755 hrs
- Max speed: 26 kn
- Cruising speed: 21 kn

#### **ACCOMMODATION**

- Cabins: 5 + 4 crew
- Berths: 10 + 6 crew
- Head Compartments: 6 + 4 crew

#### **TANK CAPACITY**

- Fuel capacity: 18000 l
- Fresh water: 3000 l
- Sewage and grey water: 2500 l

#### **GENERAL**

- Balcony at portside (in master cabin)
- Electric stern thruster
- Layout std
- Additional soundproof insulation between saloon and engine room
- Additional soundproof insulation in master cabin
- Upgrade A/C "Gulf Version"
- Double Racor filters for generators
- Safety equipment including crew and extinguishers
- Water softener and water purifier

#### **Garage**

- Tender filling station from main fuel tanks

## **EXTERIOR**

- 1 Additional sundeck with teak flooring in lieu of standard aft hard top
- 16 mm stud less chain – 150 m MV16 windless 140 kg

### **Bow Area**

- Cover for bow sitting area

### **Flybridge**

- Teak flooring on all flybridge
- Flybridge bar cabinet
- Refrigerator on flybridge
- Icemaker
- 2 coffee tables
- Barbeque Texan grill

### **Aft Cockpit**

- Electric main door in saloon
- RIGID Telescopic handrails on both sides of the gangway
- Cockpit enclosure
- Cockpit manual shade net
- Cockpit bar cabinet with refrigerator and icemaker

### **Beach Area**

- 2 chaise longue
- Coffee table

## **INTERIORS**

- Central vacuum system
- Latex – memory foam mattress
- Safe in VIP port / VIP stb and crew

### **Galley – Pantry**

- Wine cooler in galley
- Professional dishwasher
- Additional washer and dryer
- Pot holder on induction hob
- Galley trash bin

### **Master cabin**

- Fridge in master cabin
- 2 x holding armchairs
- Folding coffee table for the balcony
- Massage bed storage in owner's cabin
- Vanity with drawer
- Glass cover shelf in owner's portside cabinet
- Rails for total blackout curtains
- Vanity chair
- Safe with internal light in lieu

### **Saloon**

- Dining chairs in starboard
- 4-seat sofa without armrest
- 2-seat sofa without armrest on portside
- 2-seat sofa without armrest
- Small coffee table
- Bottle holder on top of Port entry cabinet (10 bottles)

### **Lobby**

- Refrigerator in lower deck lobby

### **Guest cabins**

- Additional folding bed in each guest cabin
- Guest cabin filler cushions
- Folding iron shelf in crew mess

## **ELECTRICAL SYSTEM**

- 6 x Underwater lights under swim platform
- Automatic parallel between generators
- Dimmer for external lights
- One Glendinning cablemasters
- Spot lights on aft flybridge
- Additional ceiling lights in Galley
- Electric curtains in main deck (saloon + master)
- Reading light in Vanity desk in master cabin

## **NAVIGATION & CONTROLS**

- Upgraded navigation package FURUNO
- AIS
- Remote control for main engines and bow thruster in cockpit and on flybridge

## **ENTERTAINMENT SYSTEM**

- Upgraded A/V package – including beach speakers
- Fixed video camera in aft cockpit ceiling
- Zooming and pivoting video camera in engine room – connected to navigation system
- Camera in saloon

All speeds, measurements, capacities, consumptions, etc. may be approximate or estimated. Specifications provided for information only. Data was obtained from sources believed to be reliable and is not guaranteed by owner or brokers. Buyer assumes the responsibility to ascertain the correctness of all data contained herein and otherwise provided and must instruct his agent and surveyors to confirm all details for accuracy prior to purchase. Subject to prior sale, price and inventory change, or withdrawal from market without notice.

---

**Disclaimer**

---



---

For more information please contact: Niso Gado  
+972-50-7644438 | [niso@azimutyachts.co.il](mailto:niso@azimutyachts.co.il) | [www.azimutyachts.co.il](http://www.azimutyachts.co.il)